

HELI

FORKLIFT

内燃平衡重式叉车
BALANCE WEIGHT TYPE FORKLIFT

CPCD120-135

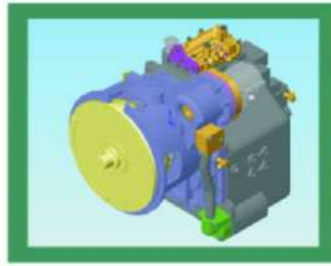


HIDRALTURA

CARRETILLAS ELEVADORAS

Dirección Comercial: C/Xavier Noguès, 12
Pol. Ind. Can Ribó
08911 Badalona

hidraltura@hidraltura.es www.hidraltura.es



发动机系统（1）：采用无锡CA6110/125ZT-HL20柴油发动机,6缸涡轮增压,额定功率117KW。该发动机系统采用优化的配气及先进的燃油系统,具有油耗低、噪音低、结构紧凑、动力输出平稳等优点,排放标准方面符合欧I标准,该机型应用广泛,性价比高。

The engine system (1): It adopts Wuxi CA6110/125ZT-HL20 diesel engine, six cylinder turbocharging and the rated power is 117kW. With the optimized distribution and advanced fuel system, this engine system has the advantages of low oil consumption and noise, compact structure and stable power take off etc and the emission standard conforms to the European standard I, therefore, this model has been widely used and has high cost performance.

发动机系统（2）：采用Cummins柴油电控发动机,6缸涡轮增压,额定功率119KW。该发动机功率、扭矩大,适合全天候作业,具有油耗低、噪音低、结构紧凑、动力输出平稳等优点,采用最先进的燃烧技术,整机排放符合U.S. EPA Tier 3, EU Stage III要求。

The engine system (2): It adopts Cummins diesel engine, electronic controls, six cylinder turbocharging and the rated power is 119kW. This engine, great in power and torsional moment, is suitable for all-weather operation and has the advantages of low oil consumption and noise, compact structure and stable power take off etc. It adopts the most advanced combustion technologies and the overall emission conforms to the requirements of EU Stage III, U.S. EPA Tier 3.

变速箱+变矩器：合力专用液力换向变速箱,配套340高性能变矩器,噪音低,质量稳定,性能可靠,电液换向控制,操纵省力方便,档位分配为前二后二。

Transmission case + torque converter: Heli specially used hydraulic reversing transmission case forms a complete set with 340 high performance torque converter, which is low in noise, stable in quality and reliable in performance. With electrohydraulic reversing control, the operation is labor-saving, convenient and the gear positions are arranged as two at front and two at the back.

驱动桥：采用美驰重载叉车专用驱动桥,设有一级螺旋主减速装置和行星传动的轮边减速装置,专门针对叉车特殊工况设计,桥壳强度高,承载能力大,性能可靠,质量稳定,嵌盘制动,拥有良好的使用性能和性价比。

The driving axle: It adopts the drive axle specially used for Meritor heavy-duty forklift and is furnished with the primary (single-stage) spiral speed reducer and the planetary wheel reductor. It is designed specially for the special work condition of the forklift. The axle housing has high strength, great carrying capacity, reliable performance and stable quality. With inlaid disc braking, it has good operational and cost performances.



制动系统：在各种场地条件下，行车制动和停车制动操作平稳，良好的制动性能是整车的亮点之一。
Braking system: Under various site conditions, the operation of service brake and parking brake is stable and the good braking performance is one of the highlights of the whole vehicle.

组合仪表：优质电子仪表，工作性能可靠，操纵时可清晰方便地观察电子仪表的各项数据，同时带有各种警示指示灯，使工作更加安全可靠。
Combination instrument: The fine quality electronic instrument is reliable in working performance and various data on the electronic instrument can be clearly and conveniently observed during operation. Meanwhile various warning indication lamps equipped make the work more safe and reliable.

缓冲装置：发动机、变速箱及驾驶室等系统均采用橡胶缓冲装置，使整车振动、噪音减小到最低水平，为操纵者提供了舒适的工作环境。
Cushion device: Rubber buffers are used for engine, transmission case and drive cab and other systems, which minimizes the vibration and noises of the whole vehicle and provides the operators with comfortable work environment.

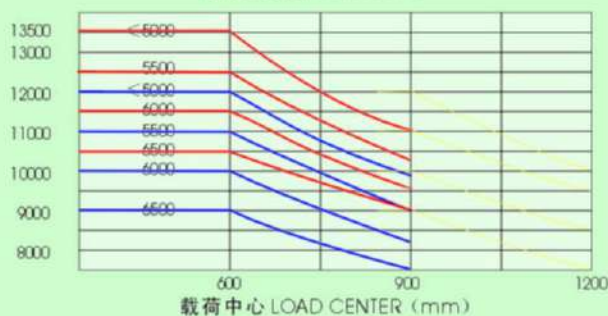
宽视野门架及货叉架系统：全新设计理念的宽视野门架与货叉架系统为操作者提供宽敞的前方视野，有利于工作安全性的改善与工作效率的提高。
Wide-field gantry and fork frame system: The wide field gantry and the fork frame system based on the brand-new design idea provide the operator with wide front field of vision, which is favorable for improving work safety and efficiency.

座椅：舒适的座椅可进行前后调节以满足操作者的实际需要，减轻长时间操作带来的疲劳。
Seat: The comfortable seats can be adjusted back and forth to meet the actual needs of the operators and relieve the fatigue caused by the long-time operation.

标准配置：带减震装置的驾驶室、丝杆调距叉、风扇、灭火器。
Standard configuration: The drive cab equipped with shock absorber, manual adjustment, fan and fire extinguisher

选配装置：实心胎、空调、收音机、液压调距叉和侧移调距叉选配。
Optional devices: solid tyre, air conditioner, radio, auto adjustment and sidesway fork positioner

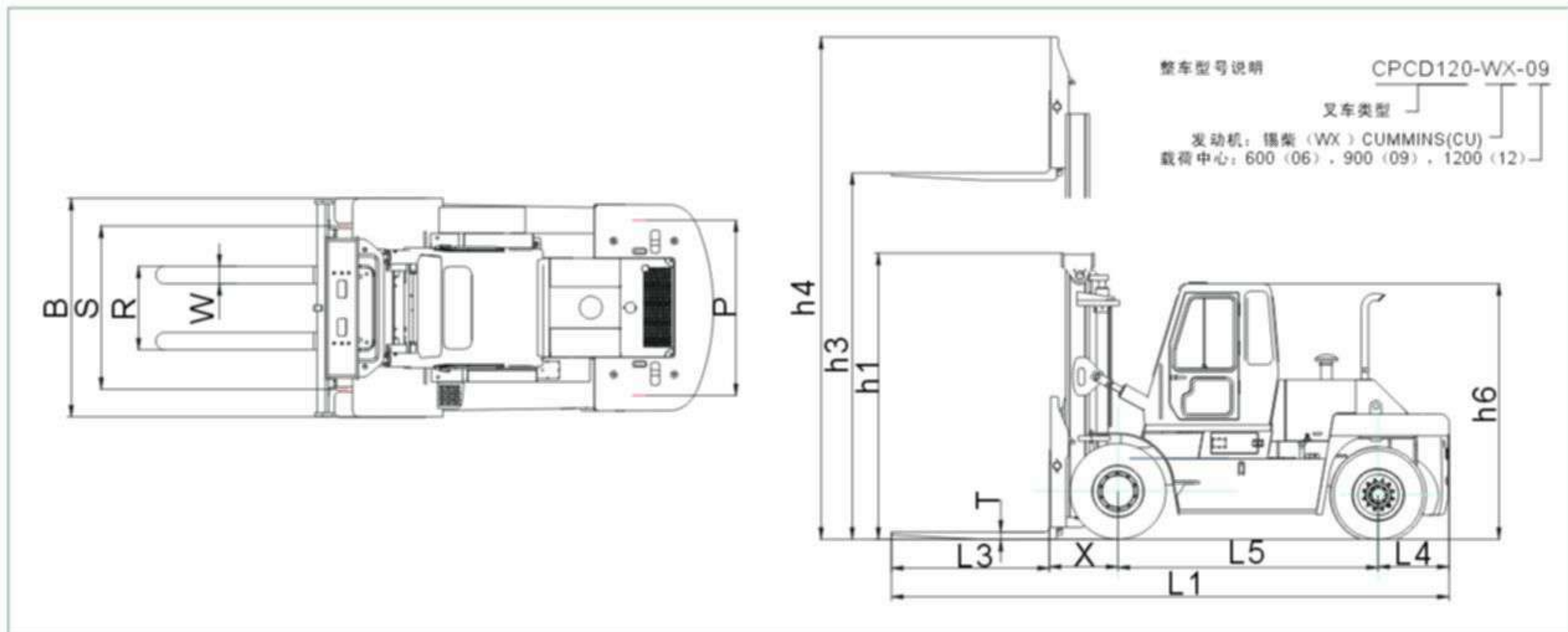
载荷曲线图 Load curve



CPCD120-XX-06 CPCD120-XX-09 CPCD135-XX-06

注：
竖轴表示承载量，横轴表示载荷中心。载荷中心是从货叉正面计算起，标准载荷的基点是指负荷边长为1000毫米的立方体中心位置。当门架前倾、使用非标准货叉或装载超过正常宽度的负荷时，将会使承载量减少。通过负荷曲线图，能及时地了解各种载荷中心时的承载能力。

Notice:
Vertical axis stands for load capacity while horizontal axis stands for load center. Load center is the distance counted from the front of the fork. The base point of the standard load is the center point of the cubic with the same 1000mm dimension in length, width and height. The load capacity should be down, if mast tilts forward, using non-standard forks or loading goods with extra width. Please notice the different load capacity between different load centers according to load chart.



SPECIFICATIONS

型号		Model		CPCD120-WX-06 CPCD120-CU-06	CPCD120-WX-09 CPCD120-CU-09	CPCD135-WX-06 CPCD135-CU-06
载荷中心		Load Centre	mm	600	900	600
起升重量		Rated Load	kg	12000		13500
起升高度（标准） h3		Lift Height (standard)	mm	3000		
起升速度 （满载）		Lifting Speed (loaded)	mm/s	350		
下降速度 （满载）		Lowng Speed (loaded)	mm/s	370		
门架倾角（前/后）		Mast Tilt (fwd/bwd)	Deg	6/12		
行驶速度（满载/空载） Travel Speed (loaded/unloaded)			km/h	28/29		
最小转弯半径		Min. Turning Radius	mm	4400	4500	
最大爬坡度		Gradeability	%	28		
外型	全长（含货叉） L1	Overall Length (with Fork)	mm	5820	6420	5820
	全宽 B	Overall Width	mm	2520		
	全高（门架不起升） h1	Overall Height (at Mast)	mm	3300		
轴距 L5		Wheelbase	mm	3000		
轮距 （前/后） S/P		Tread (fwd/bwd)	mm	1950/2050		
悬距 （前/后） X/L4		Overhang (fwd/bwd)	mm	780/820		
最小离地间隙		Min. Under clearance	mm	215		
货叉 Fork	调距范围 R	Space		500-2370		
	长度 L3	Length	mm	1220	1820	1220
	宽度/厚度 W/T	Width/Thickness	mm	200/85		
发动机 Engine	发动机制造厂商/型号	Type		Cummins QSB6.7 / Wuxi CA6110/125ZT-HL20 diesel engine		
	缸数/排量	Cyl. Number/ Displacement	/L	6/6.7 / 6/7.127		
	额定功率/转速	Rated Power/Rated Speed	kW/rpm	119 /2200 / 117/2200		
	最大扭矩/转速	Max. torque/Rotate Speed	Nm/rpm	730/1400 / 590/1600		
	油耗	Fuel Consumption	g/kWh	≤211 / ≤235		
变速箱		Transmission		Electric-hydraulic control box for HELI		
轮胎 Tye	前轮	Front		11.00-20		
	后轮	Rear		11.00-20		